

Care Home, Wymondham - Case Study



"We spoke with six people who live in the home... They told us that there were enough staff on duty to assist them and that they felt safe living in the home. They also told us that the environment was comfortable and clean and that they were provided with good quality meals and daily activities".

Care Quality Inspector March 2012.

Project Sheet

Lead Designer
Michael Spicer at
CAM-Spicer

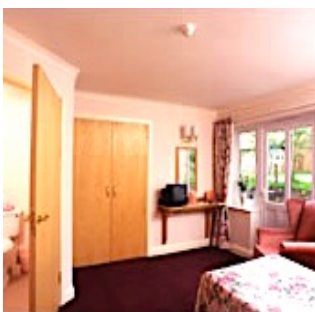
Structural Engineer
David Townend

Principal Constructor
John Youngs Ltd.

Client
East Anglia Care Homes

Construction Cost
£1 million

Construction Programme
August 1987 – August 1998



Sutherlands Care Home - Designed as a 47 bed residential and Nursing Care home for long term and intermediate care of the Elderly and patients recuperating from orthopaedic and other hospital procedures.

The client, **East Anglia Care Homes** had a precise brief – that the entire facility should be as spacious and communally inclusive as possible, offering independence, comfort and family inclusivity.

The chosen site, within a residential area was compact. The key design drivers were individual rooms and communal spaces to be more generous than that provided by the Local Authority.

In the Design, domestic scale and familiarity for its residents was important – and as much of the accommodation and communal spaces as was achievable was planned on a wholly accessible ground floor, with individual guestrooms having access to secure, private external spaces. Careful site planning and the disposition of landscaped, communal, private and staff and visitor parking spaces, achieved a very successful result.

Heating and Mechanical plant were confined to the basement, with separate external access and support services together with independent resident facilities, to the first floor via a main staircase and full bed passenger lift.



Externally, only minimum site area is devoted to staff and visitor parking and vehicle circulation and landscaped external gardens around the perimeter allow dementia residents the opportunity for purposeful meandering in a protected setting. Sutherlands was opened in 1998 by **Rt. Hon John McGregor MP**

readspicer 

The Studio
82 St. Leonards Road
Norwich
NR1 4JF

T: 01603 610200
E: enquiries@readspicer.com
www.readspicer.com

RIBA 
Chartered Practice

arb
Architects Registration Board


Chartered Institute of
Architectural Technologists

ARCHITECTURE